

LED FORK

Product description

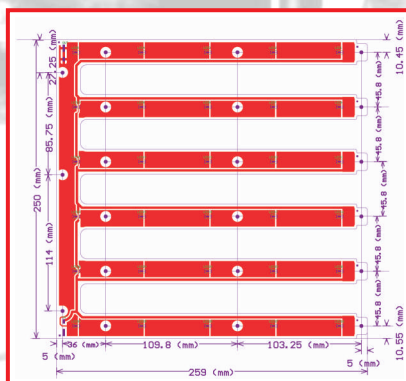


- Ideal for linear and panel lights
- Luminous flux range from 870 – 1584 lm
- Efficacy of the module up to 167 lm/W
- High colour rendering index CRI > 80
- Small colour tolerance (MacAdam 3)
- Small luminous flux tolerances
- Colour temperatures from 3000 to 6500 K
- Good uniform light, even if several LED modules are used together in a line
- Self-cooling (no additional heat sink required)
- Push terminals for quick and simple wiring of LED module to LED module
- Simple installation (e.g. screws)
- Long life-time: 50,000 hours

Fork module with Samsung LED chips of the latest generation achieve maximum efficiency values and optimum light uniformity. The modules have been specifically developed for use in panel luminaires. The product range covers colour temperatures Warm White 2700, 3000K, Neutral White 4000K and Cold White 5000, 6000K with CRI > 80 and module efficiency of up to 139 lm/W. The module is driven by constant current max 700mA with voltage of max 16V. The design is improved for simple installation. The module family covers two standards – Fork SQ30 2625 - 259mm/250mm and Fork RT30 2225 - 220mm/250mm.

Fork SQ30 2625 Fork RT30 2225	Photometric code	Typ. luminous flux at tp = 25 °C	Typ. Voltage at tp=25 °C	Typ. power consumption at tp = 25 °C	Luminous efficacy module at tp = 25 °C	Colour rendering index CR
Operating mode High Efficiency at constant current 390mA	830	870 Lm	14.75 V	5.75 W	151 Lm/W	>80
	840	930 Lm	14.75 V	5.75 W	161 Lm/W	>80
	850	960 Lm	14.75 V	5.75 W	167 Lm/W	>80
Operating mode High Output at constant current 700mA	830	1435 Lm	15.7 V	11 W	130 Lm/W	>80
	840	1534 Lm	15.7 V	11 W	139 Lm/W	>80
	850	1584 Lm	15.7 V	11 W	144 Lm/W	>80

Fork SQ30 2625



Fork RT30 2225

