



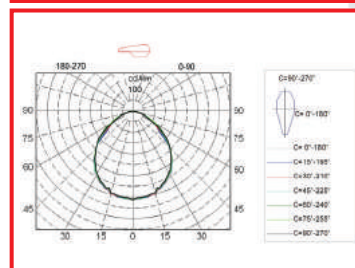
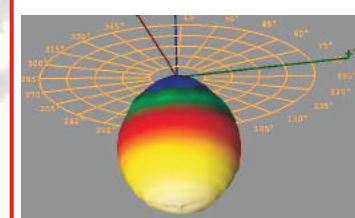
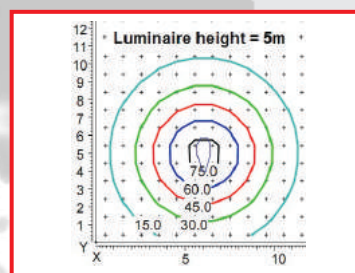
- ▶ Office lighting
- ▶ Direct and easy replace of fluorescent
- ▶ Designers looks with innovative body
- ▶ Short ROI (Return of Investment)
- ▶ Dimming available

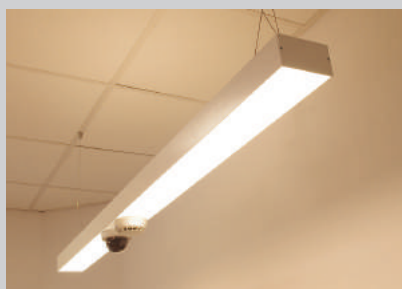
Benefits

- LED ceiling luminaire for general and task area lighting
- State of the art body design
- Housing made of sheet steel with die-cast structure
- Colour temperature from 2700K to 6000K optional
- Colour rendering index CRI Ra > 80 for office applications
- Suitable for glare control for upright and tilted displays
- Long-life LEDs reduce the maintenance and product replacement costs
- "Dimmable DALI" module is available additionally
- Emergency module is available additionally
- Microprismatic optic with precise patterning for directional light distribution with all-round glare control for maximum efficiencies

The XWING luminaire is designed to create high level of uniformity, which we perceive as natural and beautiful as the daylight is characterised. The room is immersed in natural, pleasant and unobtrusively bright light – with sufficient shadow detail and contrast rendering. The direct/indirect light typical of the luminaire's last generation is produced in closed lighting chambers, reflections are eliminated through a variety of optics. The new LED luminaire combines these tried-and-tested qualities with maximum energy efficiency and a long, maintenance-free service life. The luminaire unit has been reduced to translucent, almost immaterial lighting wings, thus putting the room and its architectural features to the fore. The innovative lighting chamber concept is responsible for the luminaire unit's low-profile look.

MODEL	XWing M	XWing B
Input power	36 W	52 W
Useful quantity of light	3 700 Lm	5 200 Lm
UGR	UGR 19 with MPO	
Led used / pcs	Samsung/Osram	
Power supply / Pfc	230V AC/ PFC>90	
Internal thermal protection	automatic	
Working temperature	-25° to +40°C	
Environment protection	IP 20	
Dimensions mm	595x595x65	
Weight kg	4 kg	
LED Lm70	50.000 h	
Application	Indoor for offices, schools, hospitals	





- ▶ Interior / Office luminaire
- ▶ Adjustable luminous flux
- ▶ Suitable for glare control
- ▶ Dimming and Emergency available

Benefits

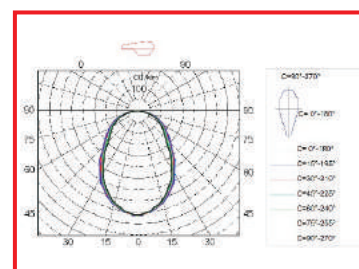
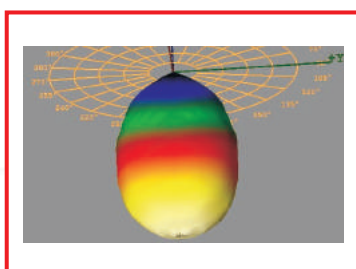
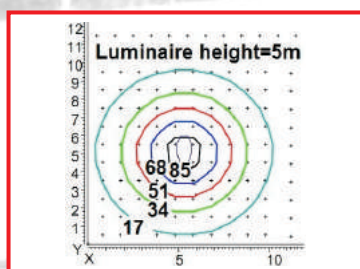
- Provides a choice of high system efficacy levels to meet different energy saving targets
- Excellent thermal management thanks to patent pending convection tunnels
- Unified Glare Rating is lower than fluorescent tube (UGR<19)
- Provides a choice of high system efficacy levels to meet different energy saving targets
- Applications are surface mounted, recessed, pendant or wall mounted
- DALI dimming and Emergency mode available

EMILI is an Endless Modular Innovative LED Illuminaire.

The module system is designed not only to provide opal diffused uniform light in an endless line on its vast 108mm wide but also to handle the different kind of wiring of the room e.g. fire alarms, security systems, central audio systems, video surveillance, computer net and etc. The wide high-grade extruded aluminum and diffuser is designed to fit smoke detectors, smoke indicators, cameras, PIR sensors, microwave sensors (could be built in invisible), audio speakers and etc. The family provides interior solutions in three efficiency levels - high efficiency, high output and standard. They can be built as surface mounted, pendant, wall mounted or recessed. The pendant and wall mounted version can be not only with direct but also indirect lightning. The modules lightning part can be produced in increment of 280mm plus 8mm a side for end caps and custom length for sensors attachments. Each module can reach up to 1976mm. Bigger sizes are available on request. EMILI is designed to be able to build an endless line with modules connected to each other and diffusers specially formed (overlapped) to hide the line between the modules. Standard CRI is 80 but can reach to 95 on request. With color temperature from 3000K to 6000K..

The module can build any figure with custom angles and sizes. Reference product code: EMILI 48ID12 W840 HEHP EMP D

Model	Power Direct light	Power Indirect light	Useful quantity of light	Input power	Dimensions mm	Weight kg	Common characteristics	
EMILI 12	12 W	-	1500 Lm	14 W	300x108x65	1.5	UGR	<19
EMILI 24	24 W	-	3000 Lm	28 W	580x108x65	2.1	Power supply	230 V AC / PFC>90
EMILI 36	36 W	-	4500 Lm	41 W	860x108x65	2.8	Working temperature	- 25° to + 40°C
EMILI 48	48 W	-	6000 Lm	55 W	1140x108x65	3.5	Environment protection	IP20
EMILI 48ID6	48 W	6 W	6800 Lm	61 W	1140x108x65	3.5	LED LM80	50.000 h
EMILI 48ID12	48 W	12 W	7300 Lm	68 W	1140x108x65	3.5	Application	Indoor
EMILI 60	60 W	-	7300 Lm	68 W	1420x108x65	4.3	Dimmable	DALI / 1-10 V
EMILI 60ID12	60 W	12 W	9800 Lm	80 W	1420x108x65	4.3	Mounting method	surface/recessed/pendant/wall
EMILI 72	72 W	-	9800 Lm	80 W	1700x108x65	5.1	Color temperature	2700 - 6000 K
EMILI 72ID18	72 W	18 W	11500 Lm	103 W	1700x108x65	5.3	Emergency	3 hours / Self test
EMILI 72ID24	72 W	24 W	12300 Lm	110 W	1700x108x65	5.3	Color	White / Black / Custom
EMILI 84	84 W	-	10500 Lm	96 W	1980x108x65	6.1	Efficiency levels	90Lm/W; 102Lm/W; 113Lm/W
EMILI 84ID24	84 W	24 W	13500 Lm	123 W	1980x108x65	6.1	Power levels	8W/280mm; 12W/280mm; 20W/280mm





- ▶ Office lighting
- ▶ Suitable for glare control
- ▶ Glare-free emission $L < 1000 \text{ cd/m}^2$ at $60^\circ/65^\circ$
- ▶ Good ROI (Return of Investment)
- ▶ Dimming and Emergency available

Benefits

- Unified Glare Rating is lower than fluorescent tube(UGR<19)
- Provides a choice of high system efficacy levels to meet different energy saving targets
- Applications are surface mounted, recessed or pendant
- DALI dimming and Emergency mode available
- Long-life LEDs reduce the maintenance and product replacement costs

LUPO is a **LED Uniform Panel** for **Offices**.

Designed with innovative technologies to provide always perfect, glare-free light.

At the same time, it is efficient and flexible: qualities by which the new generation stands out as contemporary office lighting system that provides perfect lighting conditions for many situations.

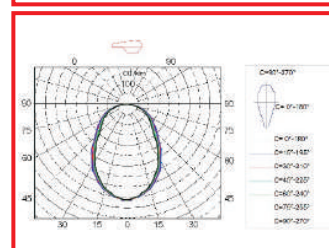
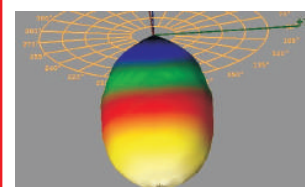
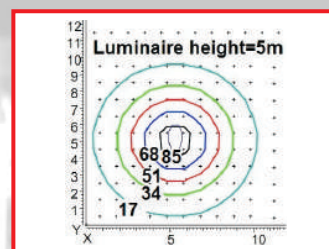
The family provides interior solutions in three efficiency levels - high efficiency, high output and standard. Available as 40W delivering up to 5200Lm and 60W with 7200Lm.

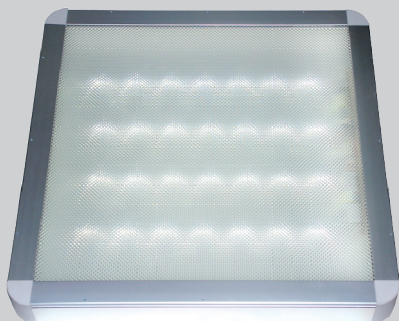
They can be build as surface mounted, pendant or recessed.

LUPO is standarty produced with dimmensions 600mm/600mm but can be customised to the conventional sizes - 300mm/300mm, 300mm/1200mm, 300mm/1500mm, 600mm/1200mm. Standard CRI is 80 but can reach to 95 on request. With color temperature from 3000K to 6000K.

Due to the high uniformity of the emitted light and the low overall brightness, the luminaire is applicable where the unified glare rating is of importance: schools, offices, hospitals, workinghalls.

MODEL	LUPO 40 W	LUPO 60 W
Input power	42 W	65 W
Useful quantity of light	5 200 Lm	7 200 Lm
UGR	UGR<19	
Power supply / Pfc	230V AC/ PFC>90	
Internal thermal protection	automatic	
Working temperature	-25° to +40°C	
Environment protection	IP 20	
Dimensions mm	595x595x50	
Weight kg	4 kg	
LED Lm80	50.000 h	
Application	Indoor for offices, schools, hospitals	





- ▶ Indoor luminaire
- ▶ Innovative design
- ▶ High environment protection with custom diffuser
- ▶ Low operating costs with short ROI (Return Of Investment)
- ▶ More light with savings of up to 55% of electricity and Efficiency of up to 122 lm/W

Benefits

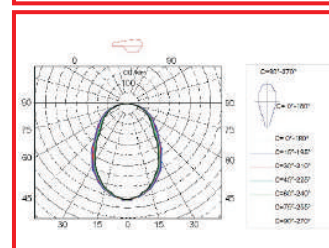
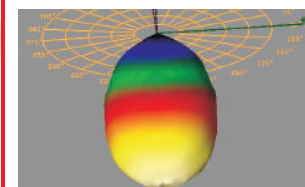
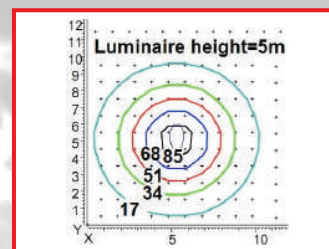
- Excellent total cost of ownership with attractive payback times
- No annoying noises, vibrations and flickering
- Long-life LEDs (with an average rated lifetime of 70,000 - 100 000 hours) reduce the maintenance and product replacement costs that are associated with fluorescent systems
- Unified Glare Rating is lower or equal to fluorescent tube
- Significant sustainability opportunity due to lower energy consumption, reduced waste and elimination of hazardous substances such as mercury and lead
- Overall, the usage of LEDs helps to reduce the internal heating in the premisses
- 100% efficacy - directed light which guarantees that all the luminosity goes where is needed

Our GRP60x60 LED luminaires are designed to replace traditional tubular fluorescent grid lamps in the areas with traditional ceilings, producing the same amount of light with savings of up to 55% of electricity. The luminaire features two types of diffusers - with prismatic or frost front window, classic looks and the latest LED technology, which provides efficiency of up to 122 lm/W. Additionally it has embedded high efficiency switching power driver with PFC and efficiency of 90%.

Thanks to the high environment protection of the housing - IP65 - the luminaire is suitable for hospitals, supermarkets and other places where extreme hygiene is necessary because it can be directly washed with detergents.

The lamps can be equipped with different diodes to suit the varying needs of the client as color temperature of the light. Overall, the usage of LEDs helps to reduce the internal heating of the room, which helps to lower needed cooling capacity of the air conditioning system. Containing no mercury, lead, or glass, GRP60x60 do not present risk of area contamination that is possible with fluorescent lamp breakage. Due to the high uniformity of the emitted light and the low overall brightness, the luminaire is applicable where the unified glare rating is of importance: schools, offices, hospitals, working halls.

MODEL	AL GRP 60x60
Input power	50 W
Useful quantity of light	5 500 Lm
Effective illuminated area/ min Lx	3x3 m/350 Lx from 2,5 m height
Led used / pcs	Mx6 CREE 122lm/W 4x7pcs
Power supply / Pfc	110/230V AC /PFC
Internal thermal protection	automatic
Working temperature	-10° to +40°C
Environment protection	IP54 Al body with prismatic or frost front window
Dimensions mm	600x600x70
Weight kg	4,5 kg
LED life span	100.000 h





- ▶ Office lighting
- ▶ Direct and easy replace of fluorescent
- ▶ Extravagant look with diffused light
- ▶ Good ROI (Return of Investment)

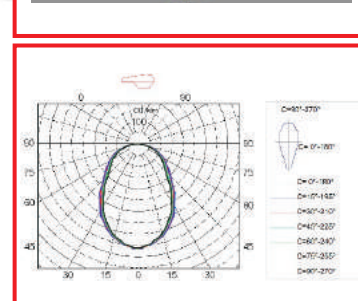
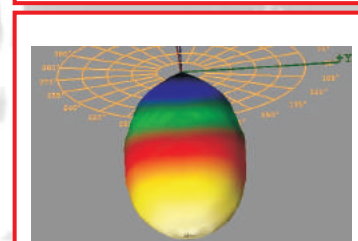
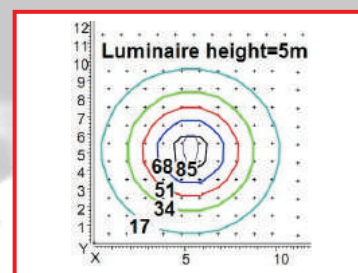
Benefits

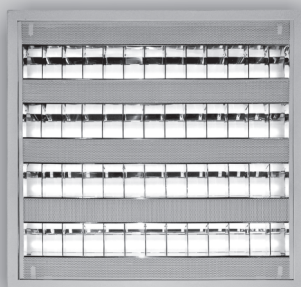
- Excellent total cost of ownership with attractive payback times
- Applications are Armstrong and plasterboard, suspended
- Long-life LEDs reduce the maintenance and product replacement costs
- Unified Glare Rating is lower or equal to fluorescent tube (UGR<19)
- Significant sustainability due to lower energy, reduced waste and no hazardous substances such as mercury and lead
- 100% efficacy - directed light which guarantees that all the luminosity goes where is needed

Our LED ECO8 luminaires are designed to replace traditional tubular fluorescent grid lamps in the areas with Armstrong type ceilings, producing the same amount of light with savings of up to 55% of electricity. The luminaire features modules with unique construction, very low UGR rating <19, high efficiency diffuser, classic looks and the latest LED technology, which increases the lamp's efficiency up to 110 lm/W. Additionally it have embedded high efficiency switching power driver with PFC and efficiency of 90%.

The lamps can be equipped with different diodes to suit the varying needs of the client as color temperature of the light and CRI up to 95. Overall, the usage of LEDs helps to reduce the internal heating of the room, which helps to lower needed cooling capacity of the air conditioning system. Containing no mercury, lead, or glass, LED ECO8 do not present risk of area contamination that is possible with fluorescent lamp breakage. Due to the high uniformity of the emitted light and the low overall brightness, the luminaire is applicable where the unified glare rating is of importance: schools, offices, hospitals, working halls.

MODEL	LED ECO8
Input power	45 W
Useful quantity of light	4 800 Lm
UGR / with diffused light	less than 19
Led used / pcs	Samsung/Osram
Power supply / Pfc	230V AC/ PFC>90
Internal thermal protection	automatic
Working temperature	-25° to +40°C
Environment protection	IP 20
Dimensions mm	595x595x50
Weight kg	4 kg
LED Lm70	50.000 h
Application	Indoor for offices, schools, hospitals





- ▶ Office lighting
- ▶ Direct and easy replace of fluorescent
- ▶ Traditional look with LED tech inside
- ▶ Short ROI (Return of Investment)
- ▶ Dimming available

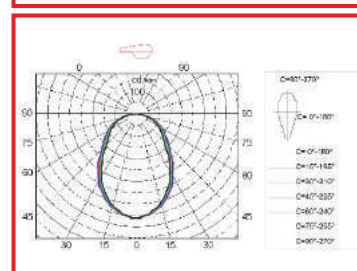
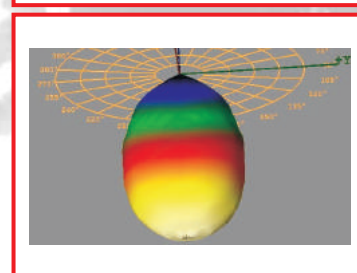
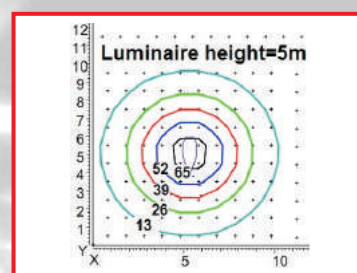
Benefits

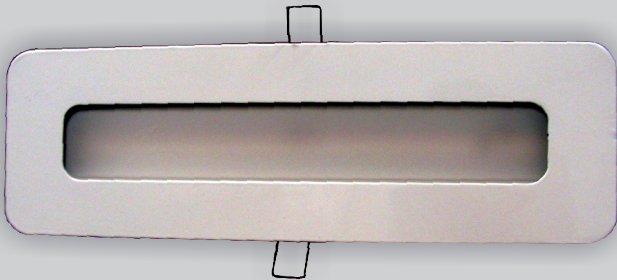
- Excellent total cost of ownership with attractive payback times
- Wide range of colour temperature from 2700-6000K
- Long-life LEDs reduce the maintenance and product replacement costs
- Unified Glare Rating is lower or equal to fluorescent tube (UGR<19)
- Significant sustainability due to lower energy, reduced waste and no hazardous substances such as mercury and lead
- 100% efficacy - directed light which guarantees that all the luminosity goes where is needed

Our GRP60x60 LED luminaires are designed to replace traditional tubular fluorescent grid lamps in the areas with Armstrong type ceilings, producing the same amount of light with savings of up to 55% of electricity. The luminaire features modules with unique construction, very low UGR rating <19, high efficiency diffuser, classic looks and the latest LED technology, which increases the lamp's efficiency up to 110 lm/W. Additionally it have embedded high efficiency switching power driver with PFC and efficiency of 90%.

The lamps can be equipped with different diodes to suit the varying needs of the client as color temperature of the light and CRI up to 95. Overall, the usage of LEDs helps to reduce the internal heating of the room, which helps to lower needed cooling capacity of the air conditioning system. Containing no mercury, lead, or glass, GRP60x60 do not present risk of area contamination that is possible with fluorescent lamp breakage. Due to the high uniformity of the emitted light and the low overall brightness, the luminaire is applicable where the unified glare rating is of importance: schools, offices, hospitals, working halls.

MODEL	LED 60x60LC
Input power	40 W
Useful quantity of light	4 100 Lm
Advantages	UGR 19 CRI>80
Led used / pcs	Samsung/Osram
Power supply / Pfc	230V AC/ PFC>90
Internal thermal protection	automatic
Working temperature	-25° to +40°C
Environment protection	IP 20
Dimensions mm	595x595x60
Weight kg	4 kg
LED Lm70	50.000 h
Application	Indoor for offices, schools, hospitals





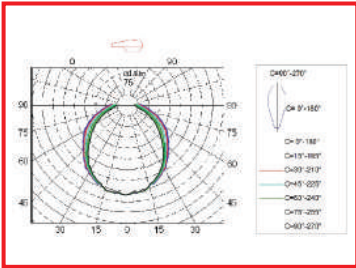
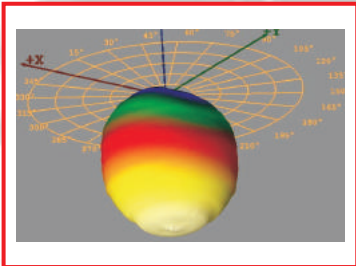
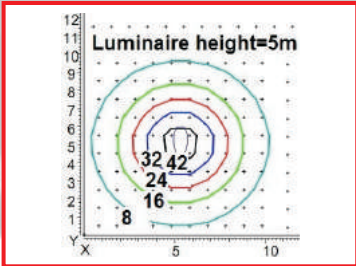
- ▶ Residential Indoor lighting
- ▶ Diffused light
- ▶ Inovative for Armstrong / plasterboard
- ▶ Easy installation

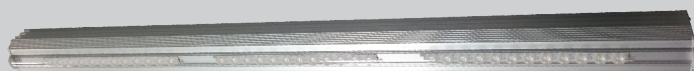
Benefits

- Excellent total cost of ownership with attractive payback times
- No annoying noises, vibrations and low flickering
- Long-life LEDs reduce the maintenance and product replacement costs
- Unified Glare Rating is lower or equal to fluorescent tube(UGR<19)
- Significant sustainability due to lower energy, reduced waste and no hazardous substances such as mercury and lead
- 100% efficacy - directed light which guarantees that all the luminocity goes where is needed

The LED C30 module is designed to be installed in Armstrong-type ceilings with classical downlight type of attaching. Very easy to install C30 is a great alternative lighting fixture if you want to achieve good luminance with great looks and low consumption. The LED C30 features unique construction, integrated mirror optics, high efficiency diffuser and the latest LED technology with efficiency up to 110 lm/W and is completely compatible with all 24Vdc (36 Vdc optional) LED power supplies. Due to the high uniformity of the emitted light and the low overall brightness, LED C30 is applicable where the unified glare rating is of importance: schools, offices, hospitals, working halls. Containing no mercury, lead, or glass, LED modules do not present risk of area contamination that is possible with fluorescent lamp breakage.

MODEL	C 30	C 60	C 120
Input power	5 W	10 W	20 W
Useful quantity of light	550 Lm	1 100 Lm	2 200 Lm
UGR / with diffused light	less than 19		
Led used / pcs	Samsung/Osram		
Power supply / Pfc	24/36V DC/current driver		
Advantages	CRI>80, Low flickering		
Working temperature	-25° to +40°C		
Environment protection	IP 21		
Dimensions mm	350x140x52	595x140x52	1195x140x52
Weight kg	0.5 kg	1 kg	2 kg
LED Lm70	50.000 h		
Colour temperature	2700K- 6000K		
Application	Working halls, shops, Malls, underground parkings		





- ▶ For high ceiling warehouses and industry
- ▶ Directed light with 2 options up to H=15 m
- ▶ Good replacement of High Bay Lights
- ▶ Short ROI (Return of Investment)

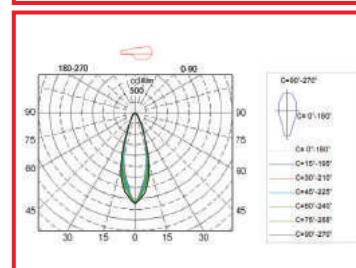
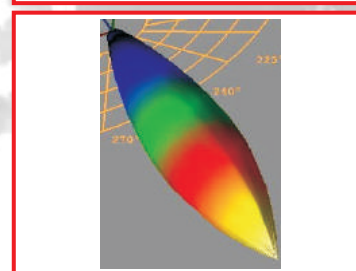
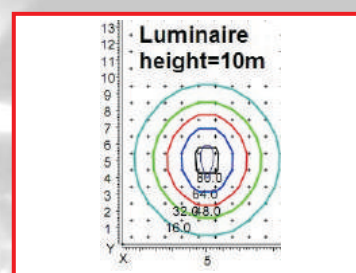
Benefits

- Excellent total cost of ownership with attractive payback times
- No annoying noises, vibrations and low flickering
- Long-life LEDs reduce the maintenance and product replacement costs
- Two lens options - up to installation height of 9m (35°) and up to 15m (19°)
- Significant sustainability due to lower energy, reduced waste and no hazardous substances such as mercury and lead
- 100% efficacy - directed light which guarantees that all the luminosity goes where is needed

Our High Bay luminaires is designed to replace traditional tubular or "bell" type fluorescent/mercury lamps in warehouses, refrigerators and industry with high ceilings. The High Bay luminaire range includes three sizes with highly varied lumen packages. Giving a bright and narrow light beam, LED High Bay provides optimal lighting at the desired place. Installation height may vary between 3 m and 15 m. Thus, the efficient LED high-bay luminaire is suitable for any application areas ranging from small scale workshops to huge industrial halls. High Bay fixture comes in two versions- 35° and 19° lenses- for installation height up to 9m and up to 15m.

Overall, the usage of LEDs helps to reduce the internal heating of the room, which is very important especially for refrigerators. Containing no mercury, lead, or glass, High-light do not present risk of food contaminations that is possible with fluorescent lamp breakage.

MODEL	HB 40	HB 70	HB 140
Input power	40 W	70 W	140 W
Useful quantity of light	3 800 Lm	7 000 Lm	13 500 Lm
Lenses	19° or 35° Lens		
Led used / pcs	CREE		
Power supply / Pfc	110/230 V AC/ PFC>90		
Internal thermal protection	automatic		
Working temperature	-25° to +40°C		
Environment protection	IP 64 Aluminium body		
Dimensions mm	500x70x85	1000x70x85	1500x70x85
Weight kg	1.5 kg	3 kg	5 kg
LED Lm70	100.000 h		
Application	High industrial halls up to 15 m		





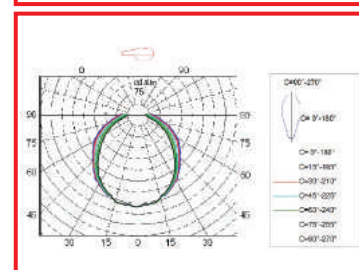
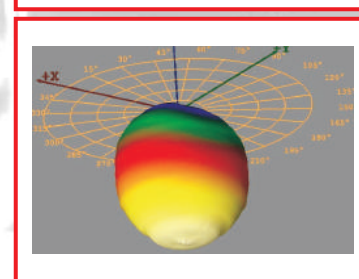
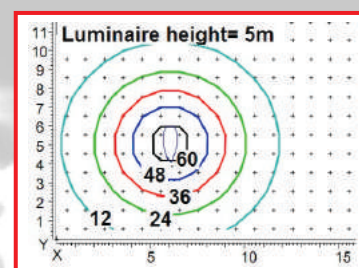
- ▶ Residential / Industrial luminaire
- ▶ Diffused light with IP65/IP66
- ▶ Traditional look with LED tech inside
- ▶ Short ROI (Return of Investment)
- ▶ Optional Dimming/Emergency/Corridor

Benefits

- Moisture-proof luminaire IP65/IP66s
- Excellent total cost of ownership with attractive payback times
- Long-life LEDs reduce the maintenance and product replacement costs
- Unified Glare Rating is lower or equal to fluorescent tube(UGR<19)
- Three standards available - 600 mm / 1200 mm / 1500 mm
- No annoying noises, vibrations and low flickering
- Significant sustainability due to lower energy, reduced waste and no hazardous substances such as mercury and lead
- 100% efficacy - directed light which guarantees that all the luminosity goes where is needed
- Approved for indoor use or in canopied outdoor areas

ProLight is a highly functional luminaire range that delivers great lighting quality in the face of dust, dirt and moisture. Durable, maintenance free and efficient: high-quality LED luminaires are a reliable lighting tool for keeping operating costs sustainably low. Aspects of economy have been combined with classical styling, performance and toughness for ProLight. When it comes to lighting quality, ProLight is bound to impress with excellent colour rendering up to $Ra > 90$ and colour temperatures from 2700 Kelvin to 6500 K. With a service life of 50,000 hours at 80 % luminous flux, ProLight is virtually maintenance free. Optionally ProLight could implement corridor function to increase the energy saving to maximum. According to the latest standards ProLight can be equipped with Emergency module with up to 4 hours stand alone time. The dimming option can also help to reduce the electricity bill. All these options make ProLight the perfect solution for even the most rigorous project.

MODEL	ProLight 60	ProLight 120	ProLight 150
Input power	20 W	40 W	50 W
Useful quantity of light	2 200 Lm	4 400 Lm	5 500 Lm
UGR	UGR 19		
Led used / pcs	Osram/Samsung		
Power supply / Pfc	230V AC/ PFC>90		
Internal thermal protection	automatic		
Working temperature	-25° to +40°C		
Environment protection	IP 65/ Optional IP 67		
Dimensions mm	600x110x100	1200x110x100	1500x110x100
Weight kg	2 kg	2.3 kg	2.6 kg
LED Lm70	50.000 h		
Application	Working halls, shops, Malls, underground parkings		





- ▶ Gas station/high ceiling luminaire
- ▶ Rotating modules to adjust light
- ▶ Low operating costs
- ▶ Short ROI (Return of Investment)

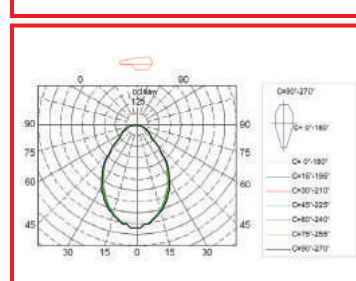
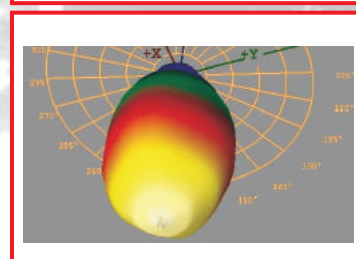
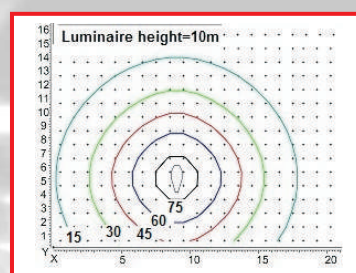
Benefits

- Excellent total cost of ownership with attractive payback times
- High efficiency going up to real 130 Lm/W
- Long-life LEDs reduce the maintenance and product replacement costs
- Rotation of the modules providing custom illuminated area
- Significant sustainability due to lower energy, reduced waste and no hazardous substances such as mercury and lead
- 100% efficacy - directed light which guarantees that all the luminosity goes where is needed

With operating margins under pressure, companies are looking for ways to save energy. LED products like our LED 4x38L14 luminaires are a perfect solution. Designed for petrol-station canopies and high ceilings, these ultra-efficient retrofit fixtures offer outstanding light quality, effective thermal management, and a very long lifespan. Reduced maintenance, replacement and energy cost means a short payback period, making LED 4x38L14 a shining example of how businesses can save money by opting for green products. The inovative housing gives you not only good enviornment protection - IP54 but the oportunity to aim the light exactly where you want it, because all of the four modules can be freely rotated and that way you can iluminate any area. 4x38L14 has also a build in power supply with power factor correction and termal protection that prologns the LEDs lifespan.

The lightening fixtures can be equipped with different diodes to suite the varying needs of the client (e.g. light beam angle and color temperature).

MODEL	3x38L14	4x38L14
Input power	70 W	140 W
Useful quantity of light	7 200 Lm	14 400 Lm
Installation height	3-15 m (customasable optics)	
Led used / pcs	Osram/CREE	
Power supply / Pfc	90-264 V AC/ PFC>90	
Internal thermal protection	automatic	
Working temperature	-25° to +40°C	
Environment protection	IP 54 Aluminium body	
Dimensions mm	420x420x80	
Weight kg	4 kg	5.5 kg
LED Lm70	100.000 h	
Application	Gas stations, high working halls	





LED Alpha A



LED Alpha B

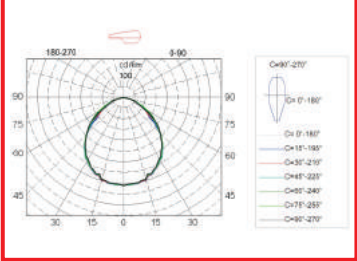
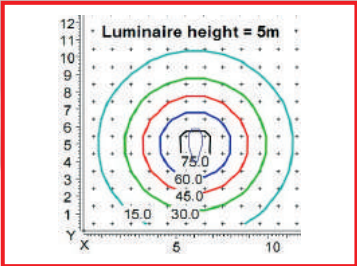
- ▶ Walkable design
- ▶ Hygienic solution - easy to clean
- ▶ Optional switchable Amber/White
- ▶ Low operation cost over lifetime
- ▶ Emergency module available

Benefits

- Applications are clean rooms, hospitals, surgery rooms, laboratories
- Excellent total cost of ownership with low operation cost and high reliability
- Colour temperature from 2700-5500K with CRI>80
- Long-life LEDs reduce the maintenance and product replacement costs
- Emergency module is add on
- Significant sustainability due to lower energy, reduced waste and no hazardous substances such as mercury and lead
- 100% efficacy - directed light which guarantees that all the luminocity goes where is needed

Hygienic LED fixture for clean rooms, labs, hospitals, etc easy to clean by spraying. With low operational cost and effortless maintainance it leads to big savings. Smooth diffused light is with high CRI>80 comming with colour temperature from 2700-5500K. The walkable design will suit different scenarios and the maintainance is done from the back of the fixture leaving the front IP65. This highly efficient diffused light offer valuable advantages packed with extraordinary ROI- return of investment. Can be produced in white and amber for photosensitive production swiching them electricly not by manually changing filters. LED Pharma is the preffered choice for pharmacies, labs and clean rooms.

MODEL	LED Pharma A	LED Pharma B
Input power	40 W	25 W
Useful quantity of light	3 700 Lm	2 000 Lm
CRI	>80	
Led used / pcs	Osram	
Power supply / Pfc	230V AC/ PFC>90	
Internal thermal protection	automatic	
Working temperature	-25° to +40°C	
Environment protection	powdercoated metal with tempered glass IP65	
Dimensions mm	675x675x120	675x340x120
Weight kg	15 kg	9 kg
LED Lm70	50.000 h	
Application	Indoor for Pharmacy, Labs, Operation rooms, Clean rooms	





- ▶ Street/Residential/High Bay luminaire
- ▶ Adjustable luminous flux
- ▶ Short ROI (Return of Investment)
- ▶ High IP65 with superior design

Benefits

- Delivers reliable performance and significant energy savings
- Provides a choice of high system efficacy levels to meet different energy saving targets
- Excellent thermal management thanks to patent pending convection tunnels
- High efficiency - up to 145 Lm/W from the fixture
- Positive impact on environment - directed light (no light pollution), no UV- and IR- irradiation
- Low maintenance costs

ELLY is highly Efficient LED Luminaire that will last for Years.

Designed as a modular fixture it can be fully customized. The family provides solutions for street, residential, high bay, solar and tunnel lightning with high output (red) - up to 12 000Lm, high efficiency (light grey) - up to 145 Lm/W, green energy (green) - dimmable, powered by battery from 10 to 30 VDC and standard (black). All the family members come in 4 sizes.

The standard CRI is 70 but can reach to 95 on request. With color temperature from 2700K to 6500K..

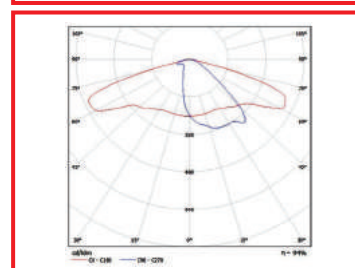
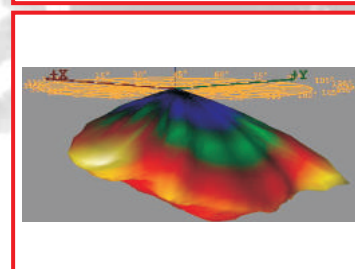
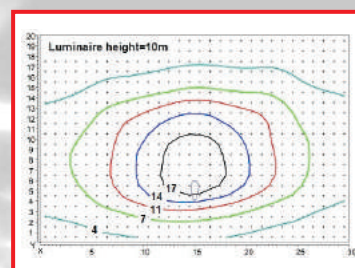
The material save environment friendly design provides up to 3500 Lm out of 27W from only 1.9 kg.

Great light distortion thanks to latest generation Ledil optics pursuant with EU street lightning standards EN 13201.

The innovativemodel design without any ribs or barrier obstacles in the way of the rain water provides self cleaning.

It is also highly cost effective build with world leading producers of LED - CREE, OSRAM; driver - Tridonic, Philips, Osram; lens - Ledil, sealing adhesives - Dau Corning; housing - high-grade extruded aluminum.

MODEL	ELLY			ELLY 2			ELLY 3			ELLY G
	ELLY B	ELLY R	ELLY LG	ELLY B	ELLY R	ELLY LG	ELLY B	ELLY R	ELLY LG	GREEN
Input power	28W	33W	22W	55W	72W	45W	82W	100W	70W	20W
Useful quantity of light	3300Lm	3700Lm	3000Lm	6750Lm	8150Lm	6000Lm	10100Lm	11300Lm	9000Lm	2700Lm
Dimensions	275x160x75			515x160x75			755x160x75			250x160x75
Weight	2 kg			3.9 kg			5.8 kg			1.8 kg
Power supply	230 VAC / PFC>90									10-30VDC PWM dimmable
Installation height	6 meters									
LEDs used	CREE / OSRAM									
Mounting method	Pole 60mm / surface or pendant									
Lenses	LEDiL covering EN 13201 standart									
Thermal protection	automatic build in									
Working temperature	-25 to +40°C / -40 to +50°C optional									
Environment protection	Ingress Protection IP65									
LED LM80	100.000 hours									
Application	street, residential, solar / high bay, tunnel lightning									





- ▶ Street / residential luminaire
- ▶ High luminous flux
- ▶ Short ROI (Return of Investment)
- ▶ High IP65 with wide temp. range

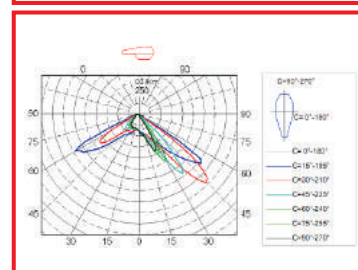
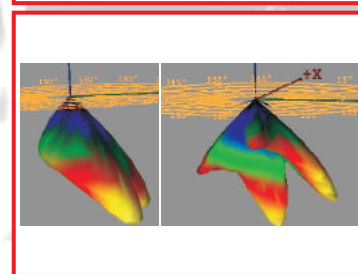
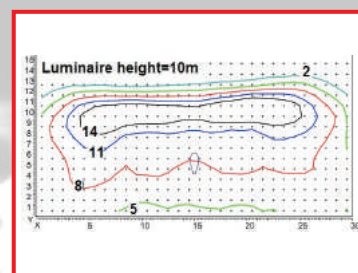
Benefits

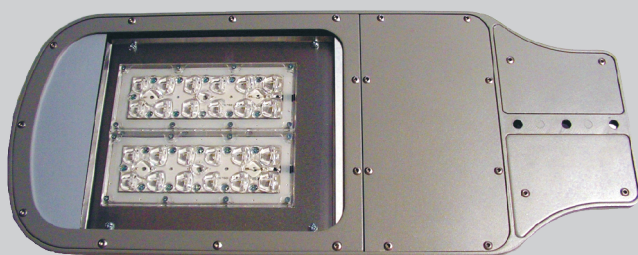
- Delivers reliable performance and significant energy savings
- Provides a choice of high system efficacy levels to meet different energy saving targets
- Attractive design adds a touch of style to city streets
- Ensures visual comfort for all users
- Positive impact on environment - directed light (no light pollution), no UV- and IR-irradiation
- Low maintenance costs

The LED 35R24I/60R2x24I is a state of the art eccentric looking luminaire designed for any outdoor need - street and area lightening. Following the main design direction to dissipate heat from the LEDs in order to ensure the perfect working conditions. The special form of the aluminium body makes it impossible to contaminate with dust and particles during normal exploitation. LED 35R24I/60R2x24I is compatible with solar systems. This is a low cost, high class, energy-efficient luminaire requiring minimal maintenance. The low wattage but high luminous flux make LED 35 R 24 I the perfect choice for any budget. LED 35R24I/60R2x24I can be installed to horizontal shaft - standart for street lightning. It comes in a variety of body colors. The temperature color and angle of beam can also be customised.

An interesting fact is that a few of these lighting fixtures are illuminating the Bulgarian station on the South Pole for a couple of years without experiencing any problems despite the extreme conditions they are subjected to.

MODEL	35R24I	60R2x24I
Input power	40 W	80 W
Useful quantity of light	4 250 Lm	8 500 Lm
Installation height	9 m	
Led used / pcs	CREE	
Lenses	Street Butterfly	
Power supply / Pfc	110/230V AC/ PFC>90 24/36V ot 12VDC	
Internal thermal protection	automatic	
Working temperature	-25° to +50°C	
Environment protection	IP 65 Aluminium body	
Dimensions mm	300x180x100	600x180x100
Weight kg	5 kg	9 kg
LED Lm70	100.000 h	





- ▶ Street / residential luminaire
- ▶ High luminous flux
- ▶ Customasable lenses
- ▶ High IP65 with tempered glass

Benefits

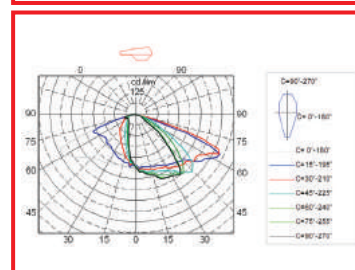
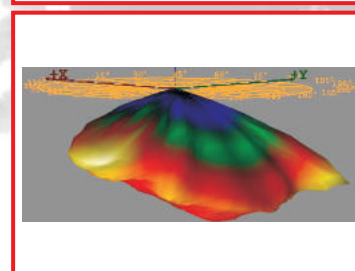
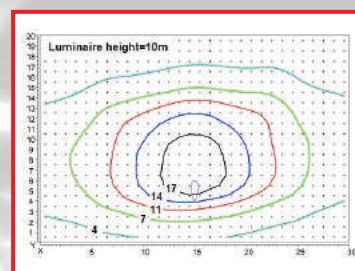
- Delivers reliable performance and significant energy savings
- Provides a choice of high system efficacy levels to meet different energy saving targets
- Simple, economical, sustainable and reliable LED luminaire
- Ensures visual comfort for all users
- Positive impact on environment - directed light (no light pollution), no UV- and IR-irradiation
- Low maintainance costs

Energy-efficient outdoor lighting solutions are important in every municipality, for reasons of environmental protection, light aesthetics and safety at night. Furthermore, we need solutions we can truly rely on. Our model 402C LED road-lighting luminaire brings a new quality of light to residential areas, industrial estates, local roads and cycle paths. This is the perfect combination - superior optics, a weatherproof housing and easy maintenance.

This lightening fixture has two easy changeable and upgradable LED PCBs making it a great investment.

The color temperature can also be customised. Along with the high enviornment protection model 402C comes with a build in thermal protection and high efective power supply.

MODEL	LED 402B	LED 402C	LED 402D
Input power	30 W	60 W	80 W
Useful quantity of light	3 200 Lm	6 000 Lm	8 000 Lm
Installation height	6 m		
Led used / pcs	Osram/CREE		
Lenses	Street Lenses		
Power supply / Pfc	24V DC	110/230V AC/ PFC>90	
Internal thermal protection	automatic		
Working temperature	-25° to +40°C		
Environment protection	IP 65 Aluminium body with tempered glass		
Dimensions mm	1000x70x85		
Weight kg	6 kg	7 kg	7.5 kg
LED Lm70	100.000 h		



- ▶

Excellent visibility - specialised road signalisation LEDs
- ▶

RF+wire communication
- ▶

Modular construction - can be build in any old one
- ▶

Build-in clock and thermometer
- ▶

Custom back lightening
- ▶

Low power consumption
- ▶

Easy instalation

Benefits

- High efficiency leading to lower energy consumption
- No annoying noises, vibrations and flickering
- Long-life LEDs (with an average rated lifetime of 70,000 - 100 000 hours) reduce the maintenance and product replacement costs that are associated with fluorescent systems
- Great visibility
- Ease of installation and adjustment
- Custom light color
- 100% efficacy - directed light which guarantees that all the luminocity goes where is needed

Based on the growing need of lowering energy consumption and increasing the visibility of the petrol station "flag" we have developed a totem with a modular construction - every module is separeted from the others and there can be connected up to 16 modules and 2 clocks/termometer (one on each side). There is a backlight for the petrol station name and the names of the products (diesel, A95, etc.). The used LEDs are special series for road signalisation - extremely visible even in direct sunlight. Their color can be customised as the color of the backlight. Every row - sign backlight plus lighting price tag has a total consumption of only 12 Watts. Thanks to the modular concept the modules can be build in any old petrol station totem. Because of the long LEDs lifespan - 100000 hours - there is no actual maintanance needed. The totem includes a build in termometer along the clock.

The installation can be done by a none technical personal - easy to install. Clock and price adjustment can be done by a RF remote, a keyboard buil in the totem or somewhere close or by a computer - it is up to the customer to dicide what suites him best.

GENERAL CHARACTERISTICS	
LED chip manufacturer	OSRAM
Modules count	max. 16
Life of the LEDs	100.000 h
Operating temperature	-25° to +50°C
Signs per module	3 + decimal point
Module length/height cm	280/860
Wattage per row	12 W
Clock+termometer with build in backup power supply	4 digits, 2 blinking dots, and a minus sign
Backlight	custom color
Control	RF remote, keybord, computer

